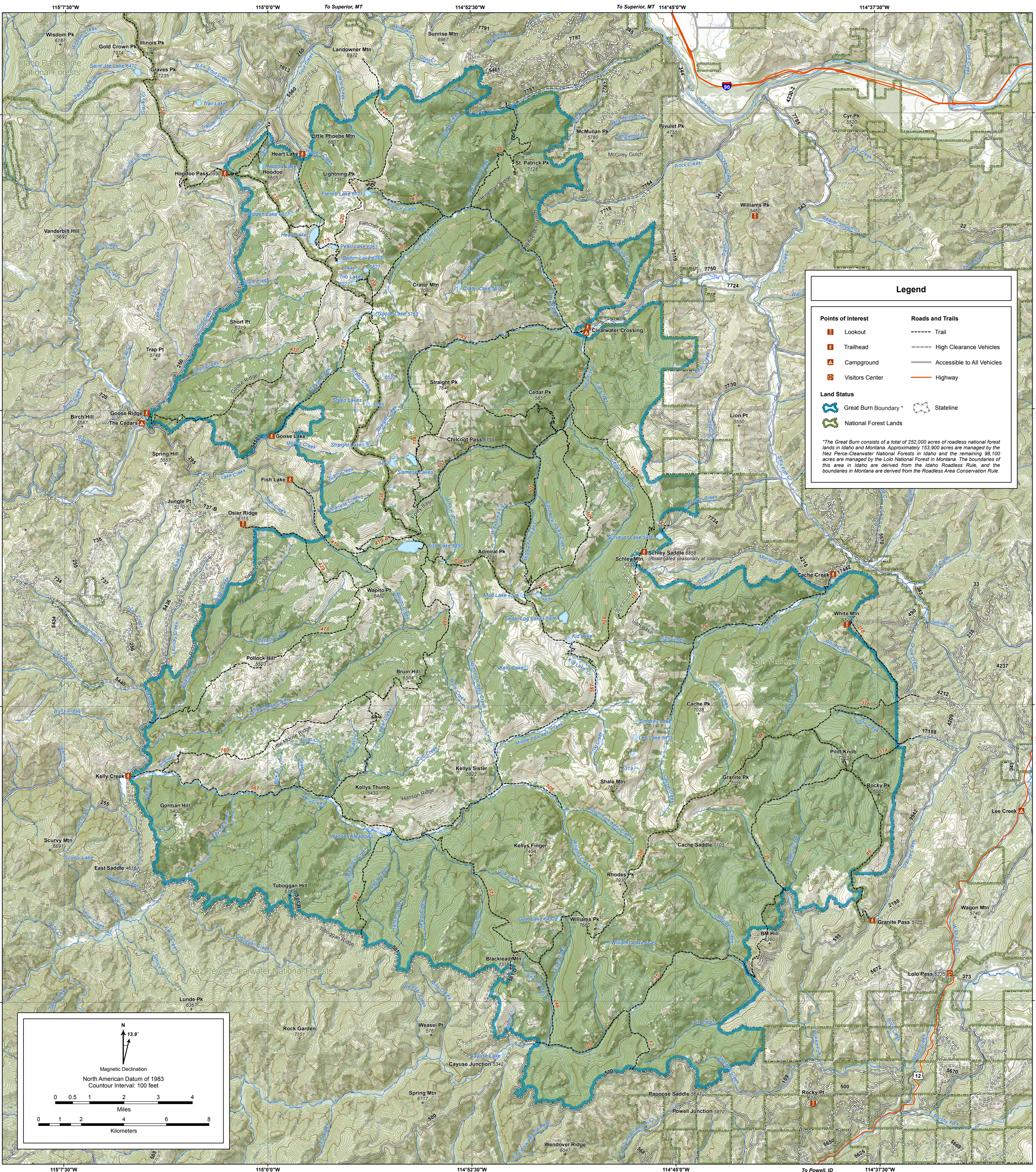


# The Proposed Great Burn Wilderness

## Yours to discover!

Designed and produced by Blue Creek Press  
and Terra Ignato Cartography  
[www.bluecreekpress.com](http://www.bluecreekpress.com)



### Planning Your Trip: Resources

**Ninemile Ranger District**  
20325 Remount Road  
Huson, MT 59846  
406-626-5201

**Superior Ranger District**  
PO Box 460  
209 West Riverside  
Superior, MT 59872  
406-822-4233

**Missoula Ranger District**  
24 Fort Missoula Road  
Missoula, MT 59803  
406-329-3814

**Lolo Pass Visitor Center/  
Powell Ranger District**  
21200 Highway 12 West  
Lolo, MT 59847  
208-942-3113

### The Great Burn

**USGS 7.5 minute Quad Maps**  
Download the following USGS  
maps free @ <http://store.usgs.gov>

Hoodoo Pass  
Straight Peak

St. Patrick Peak  
Schley Mountain  
Bruin Hill  
Toboggan Ridge  
Rhodes Peak  
Granite Pass

### Yours to discover!

#### Leave No Trace Principles

1. Plan Ahead and Prepare
2. Travel and Camp on Durable Surfaces
3. Dispose of Waste Properly
4. Leave What You Find
5. Minimize Campfire Impacts
6. Respect Wildlife
7. Be Considerate of Other Visitors



8. Please observe a 10-person group size limit.
- The member-driven Leave No Trace Center for Outdoor Ethics teaches people how to enjoy the outdoors responsibly. This copyrighted information has been reprinted with permission from the **Leave No Trace Center for Outdoor Ethics: [www.LNT.org](http://www.LNT.org)**



**Lolo National Forest  
Supervisor's Office**  
24 Fort Missoula Road  
Missoula, MT 59803  
406-329-3750  
<http://www.fs.usda.gov/lolo>

